

WEST MIDLANDS FIRE SERVICE

Making the West Midlands Safer, Stronger and Healthier

wmfs.net

@WestMidsFire

CONSULTATION 2016/17

21

1

1

Freepost RRZE-ZCGJ-ZCSR
WMFS Consultation
Registry Department
West Midlands Fire Service
99 Vauxhall Road
Birmingham
B7 4HW



PLEASE COMPLETE THE DETAILS BELOW BEFORE TAKING THIS SURVEY.

Please tell us where you heard about this survey:

Local Station (please state)

West Midlands Fire Service Department/Partnership (please state)

Fire Safety ☐

ABOUT YOU

Have you signed up to our Community Membership scheme?

Yes ☐ No ☐

Postcode:

Email:

Telephone:

GENDER AND AGE

Male ☐ Female ☐

16-24 ☐ 25-44 ☐ 45-64 ☐ 65+ ☐ I do not wish to disclose ☐

ETHNICITY

Asian British ☐ Indian ☐ Pakistani ☐ Bangladeshi ☐

White and Black ☐ White and Asian ☐ Other Mixed ☐

Black British ☐ Caribbean/African ☐

White British/Irish ☐

Other (please state)

RELIGION AND BELIEF

None ☐ Christian (all denominations) ☐ Hindu ☐ Muslim ☐ Sikh ☐ Other Religion ☐

I do not wish to disclose ☐

INTRODUCTION

West Midlands Fire Service serves a population of 2.8 million people. We're dedicated to making our communities and businesses Safer, Stronger and Healthier - across Birmingham, Coventry, Dudley, Sandwell, Solihull, Walsall and Wolverhampton.

We hope our survey will help you understand how we are organised and how we operate, so we can get your valued feedback.

It covers three main areas:

- our services
- our accountability to our communities
- our funding

Just by answering our few short questions, you'll be helping us to make the West Midlands Safer, Stronger and Healthier. Thank you!

THE SERVICES WE PROVIDE

You might be surprised by the number and variety of services we provide – far more than responding to fires and traffic collisions. We split our work into three categories:



To be able to provide these services we need to make sure we've got the right people and resources in the right place at the right time. If not, we'd struggle to get to the most serious incidents within our target of five minutes. We aim for five minutes because our research and experience tells us that getting there quickly and safely increases the chances of a person or business surviving.

To help us decide what resources we need, where and when we analyse the risks faced by our communities. As an example, imagine we identify a road where lots of collisions are happening. We look at the facts and figures – things like our own data, studies done by universities, information from our 'partner' organisations like the other emergency services and councils. Then, using our professional skills and judgement, we come up with a plan of action to keep the road's users safer.

We get £56 per year from the council tax paid on a band 'D' property. We're also part-funded by a grant from the Government – but this has been reducing by millions and there might come a time when we have to sacrifice our five-minute target.

Question 1a

We know that getting to people, homes and businesses in 5 minutes means they are more likely to survive serious incidents. Do you agree we should continue to protect our 5-minute target?

Yes ☐

No ☐

Don't know ☐

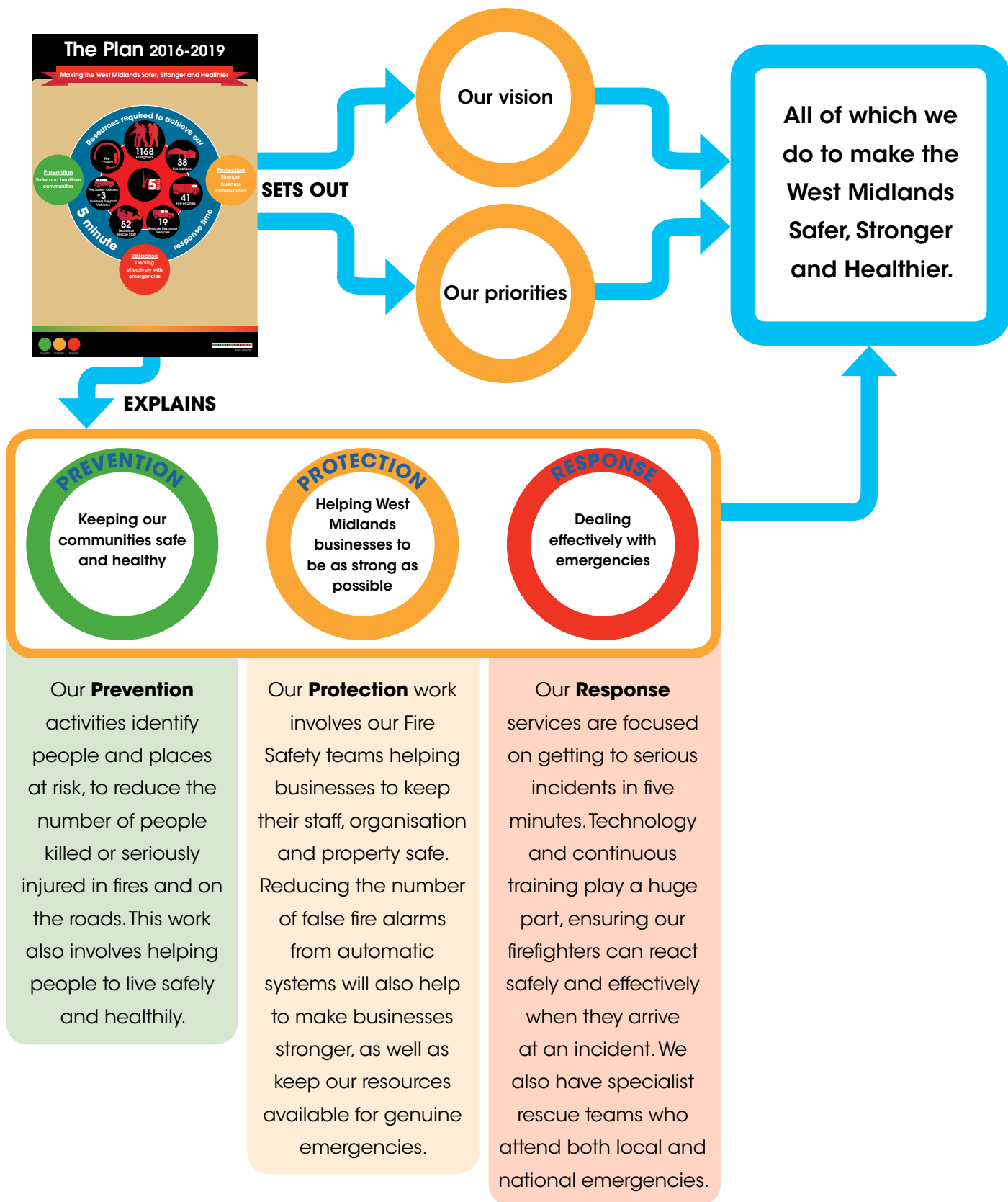
Question 1b

Our plans include a 1.99% increase in council tax which amounts to £1.12 to an average band 'D' property per year. Would you support consideration of a further increase of up to £5 per year in order to protect our 5 minute target?

Yes ☐

No ☐

Don't Know ☐



Question 1c

Do you agree that our Prevention, Protection and Response work will make the communities and businesses of the West Midlands Safer, Stronger and Healthier?

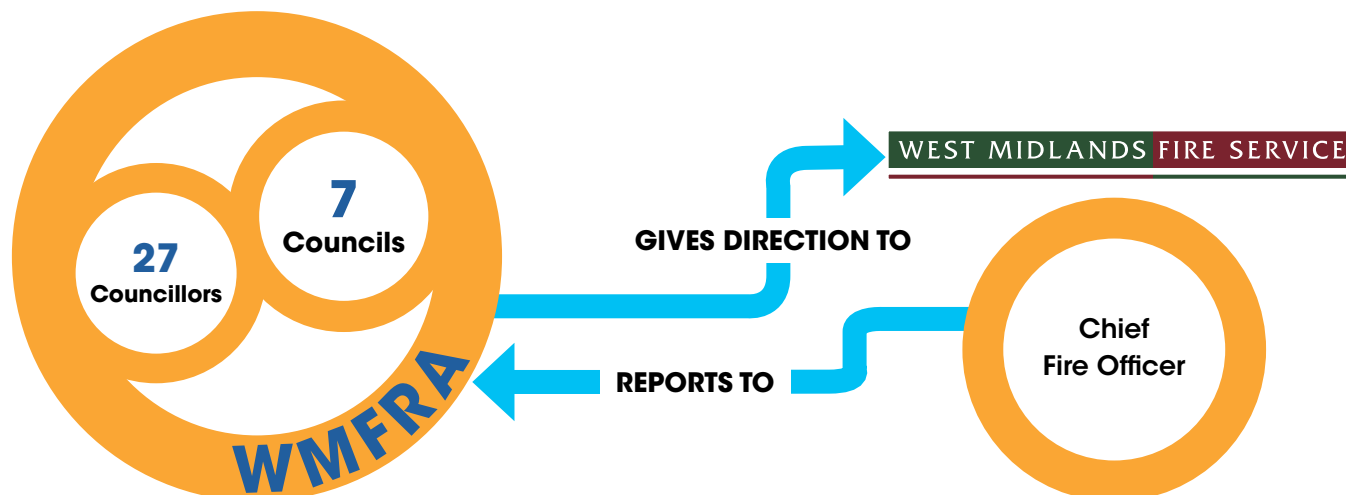
Yes ☐

No ☐

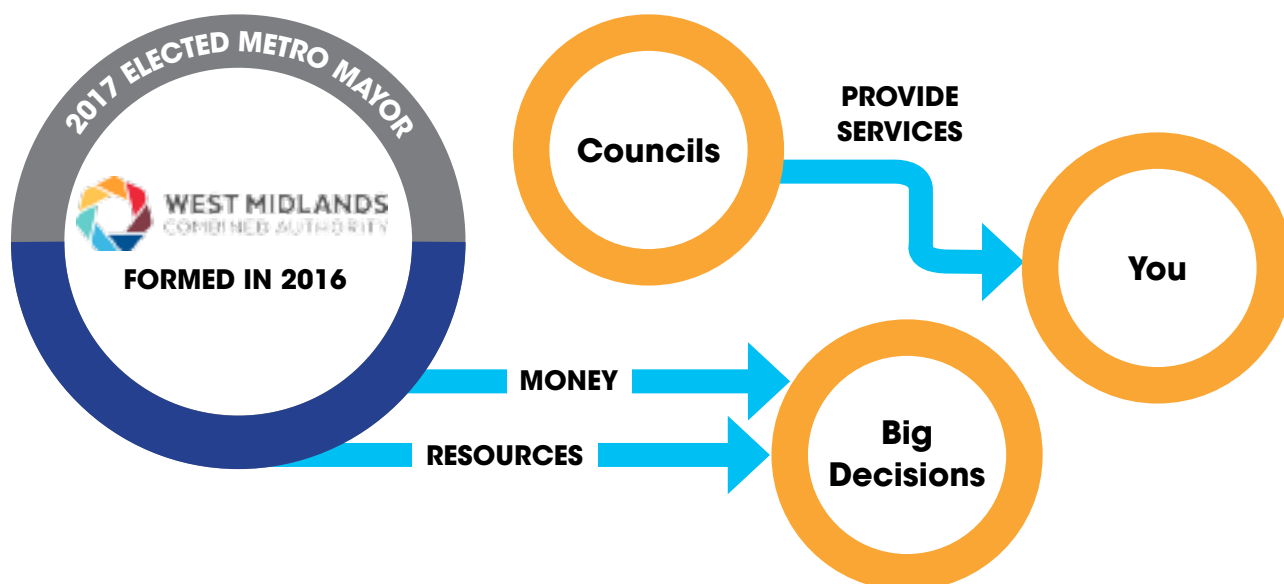
Don't know ☐

HOW WE'RE ACCOUNTABLE TO OUR COMMUNITIES

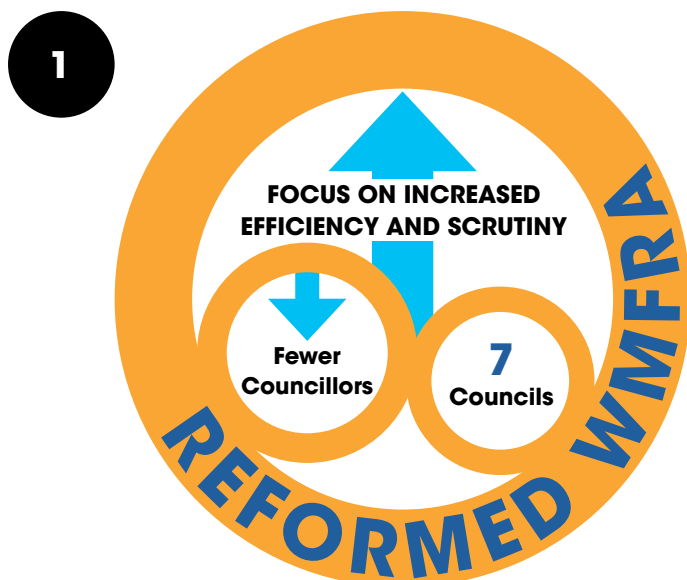
Our work and the way we deliver our services to you is governed, and we're accountable to the public, via West Midlands Fire and Rescue Authority (WMFRA).



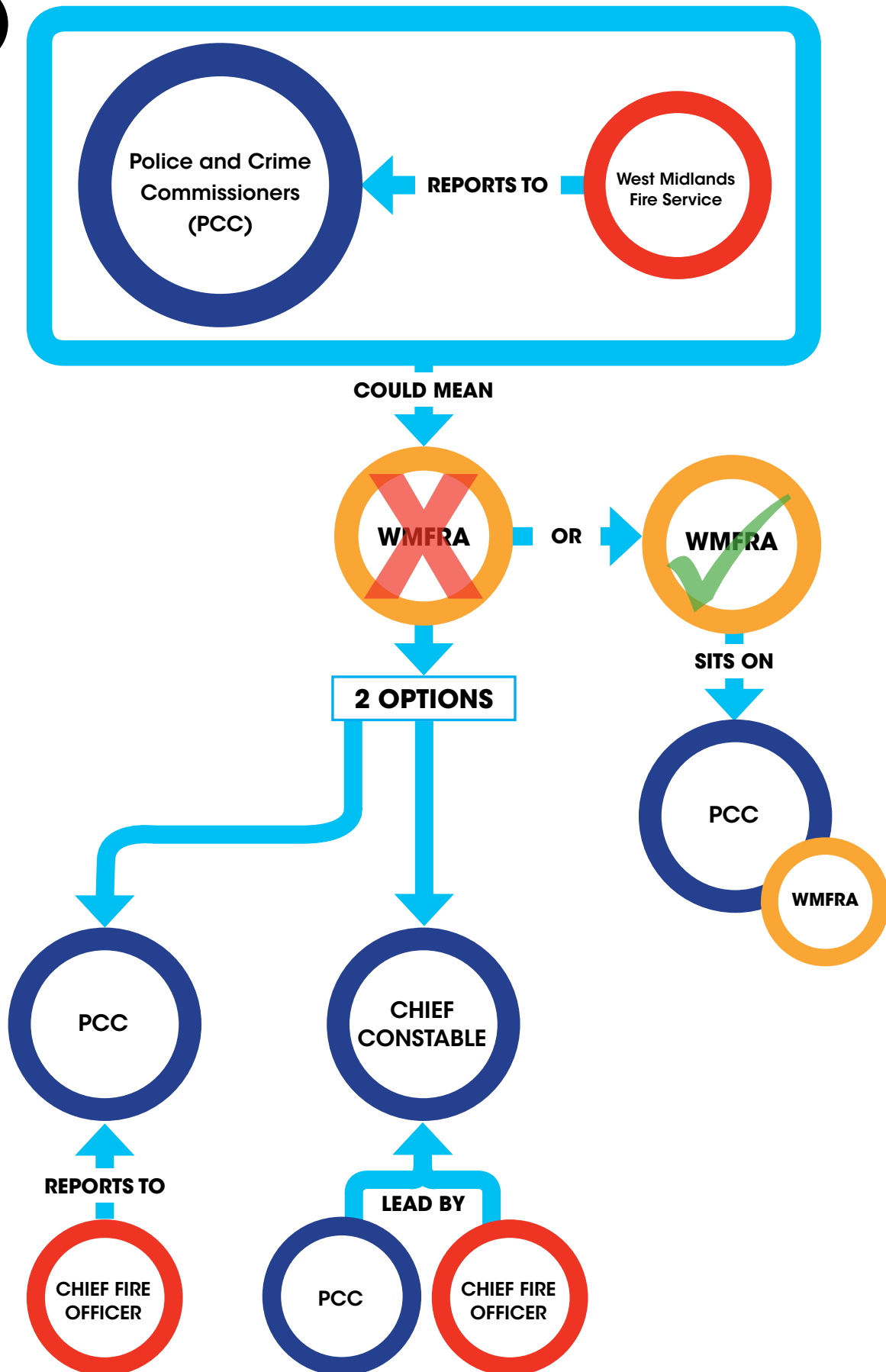
New legislation currently being proposed aims to encourage closer 'partnership' working between the emergency services and other organisations. It also proposes changes to the governance of Fire and Rescue Services, where locally agreed.



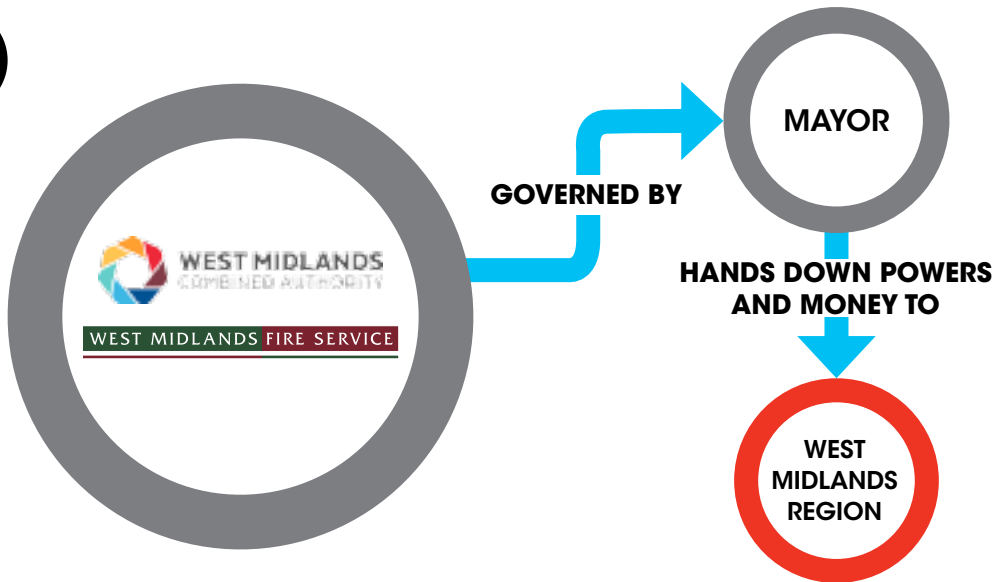
This provides an opportunity to explore different options for how West Midlands Fire Service is governed and held accountable. There are four options:



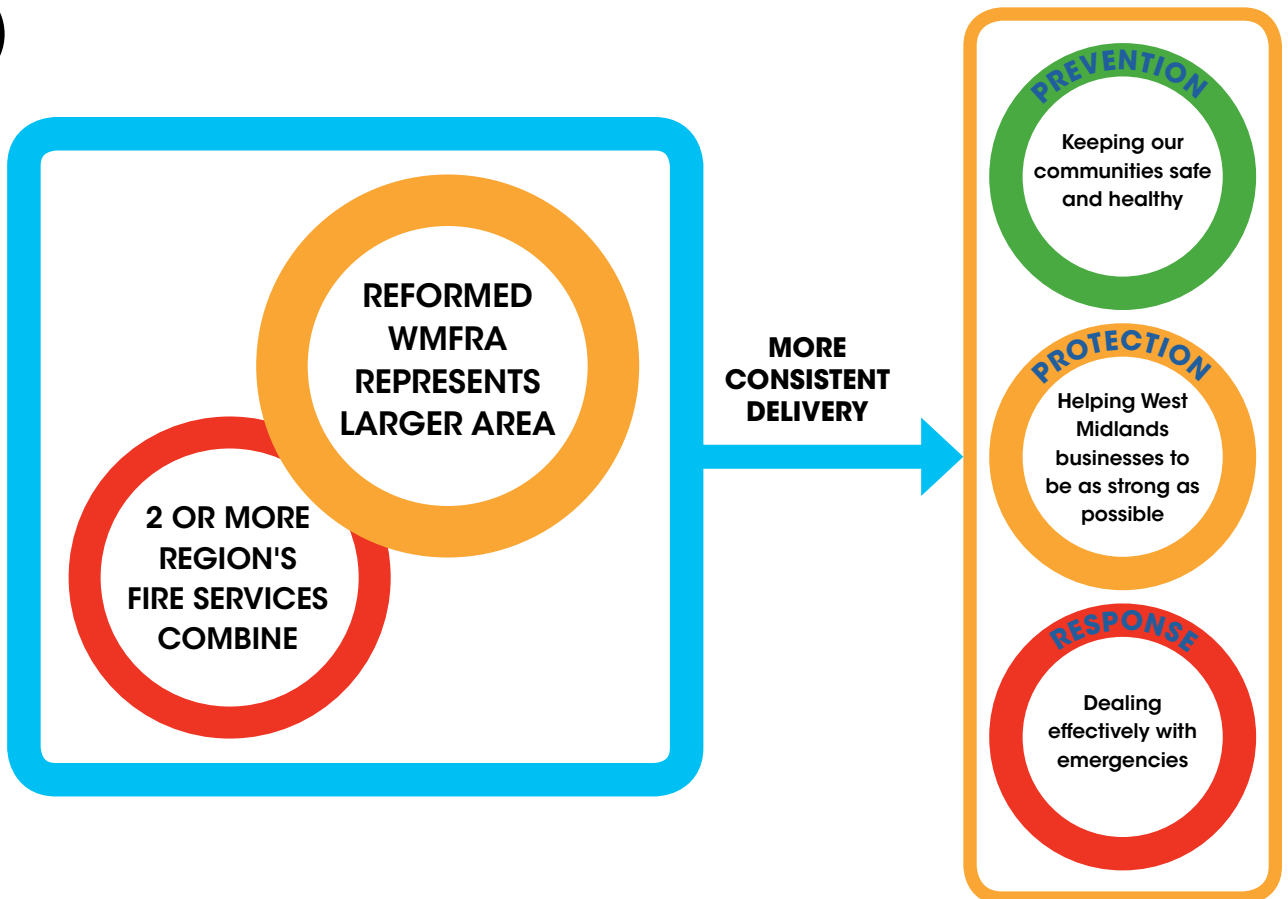
2



3



4



Question 2a

What do you think are the most important things to consider when it comes to how we are governed?

(1-6 priority order)

Provides value for money ☐

Safety (prevention, protection, response) ☐

Working with other organisations ☐

More scrutiny ☐

More transparency ☐

More accountability ☐

Question2b

Which of these options would best support the delivery with our partners of our prevention, protection and response services to you? Please rank priority order (1-4).

Option 1 ☐

Option 2 ☐

Option 3 ☐

Option 4 ☐

Don't know ☐

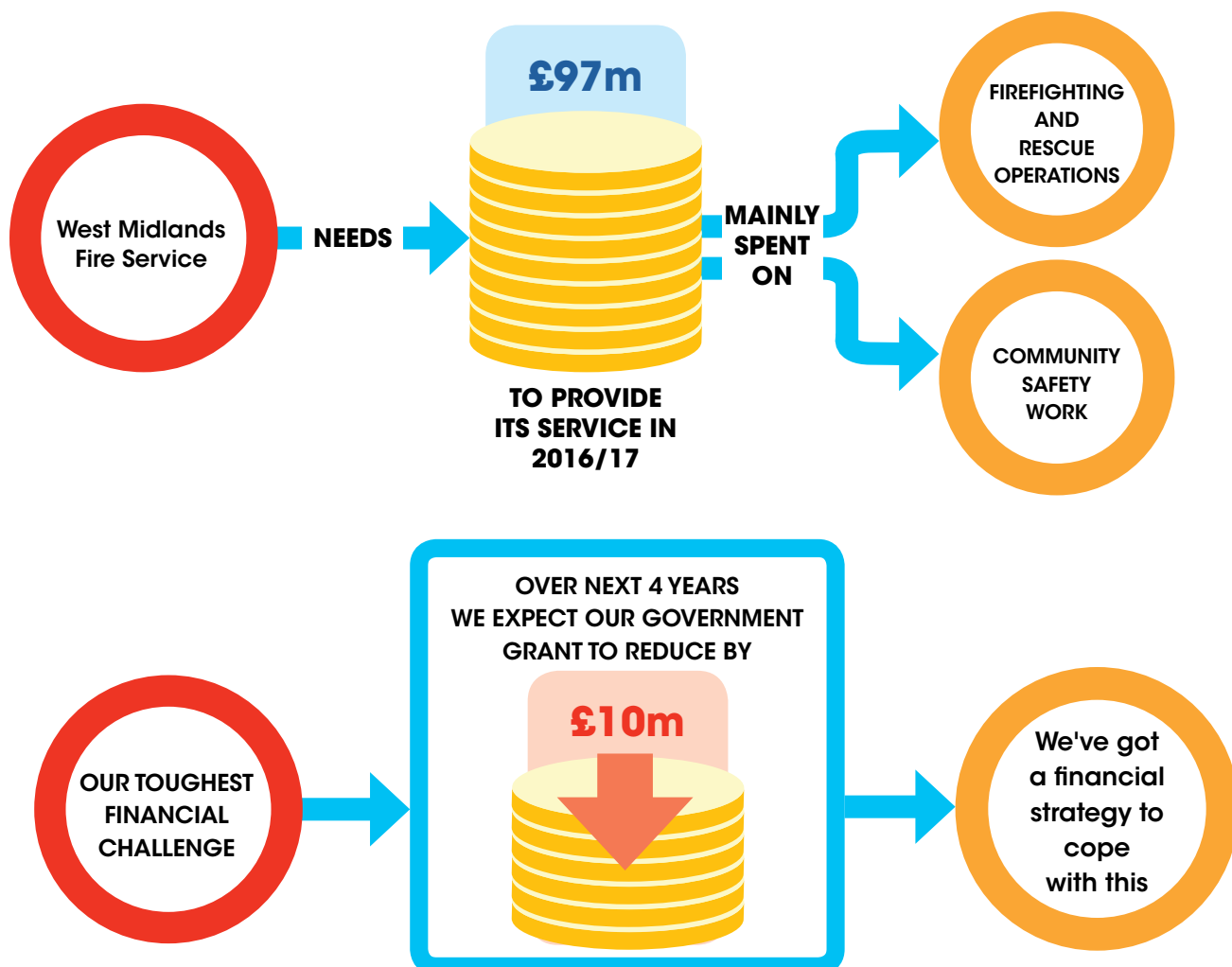
FUNDING

West Midlands Fire Service will need £97m to provide its services in 2016/17. It will be spent, in the main, on firefighting and rescue operations plus community safety work.

We're facing our toughest financial challenge ever. Over the next four years we're expecting to see our Government grant reduce by around £10 million – but we've got a financial strategy to cope with this.

However, to continue delivering excellent services to our communities, like getting to you within 5 minutes, beyond the next four years we'll need to look at alternative funding opportunities.

We are currently being paid by some councils to respond to vulnerable people who have fallen at home, or by hospitals to support people who are being discharged and getting home, but we may look at getting additional funding for example working with private enterprises as well.



However, to continue delivering excellent services to our communities, like getting to you within 5 minutes, beyond the next four years we'll need to look at alternative funding opportunities.

We are currently being paid by some councils to respond to vulnerable people who have fallen at home, or by hospitals to support people who are being discharged and getting home, but we may look at getting additional funding for example working with private enterprises as well.

Question 3a

Considering we already get a Government grant and money from Council Tax, should we continue to look at alternative ways of bringing in money?

Yes ☐

No ☐

Don't Know ☐

The Government is asking people what they think of letting councils keep all of the business rates they collect. At the moment, half goes to the Government and part of the money they give us comes out of this.

Question 3b

Do you think your fire service's funding should be linked to the business rates collected by the West Midlands' seven councils, or come from a completely new Government grant which has no link to local business rate collections? (Please select one option)

Business rates ☐

Government grant ☐

Don't know ☐

Do you have any other comments you would like to share?

Find out more about what we do to make the West Midlands



follow us on:



@WestMidsFire

or visit

www.wmfs.net

Do something great today

**Become a
West Midlands
Fire Service
Community Member**

www.wmfs.net

  **WestMidsFire**

Once completed please seal the document using the tab provided and post back to us.

Thank you for helping us make the West Midlands Safer, Stronger and Healthier.



CONSULTATION
2016/17